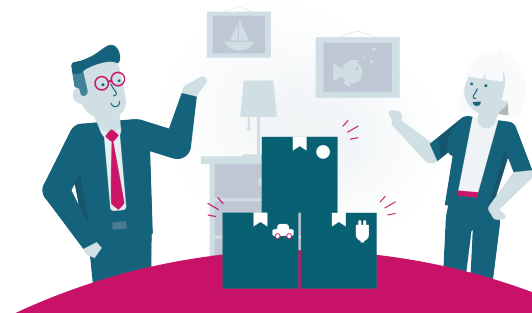



# Technical data sheet for the software application **dataspot.** (dataspot. as a Service)

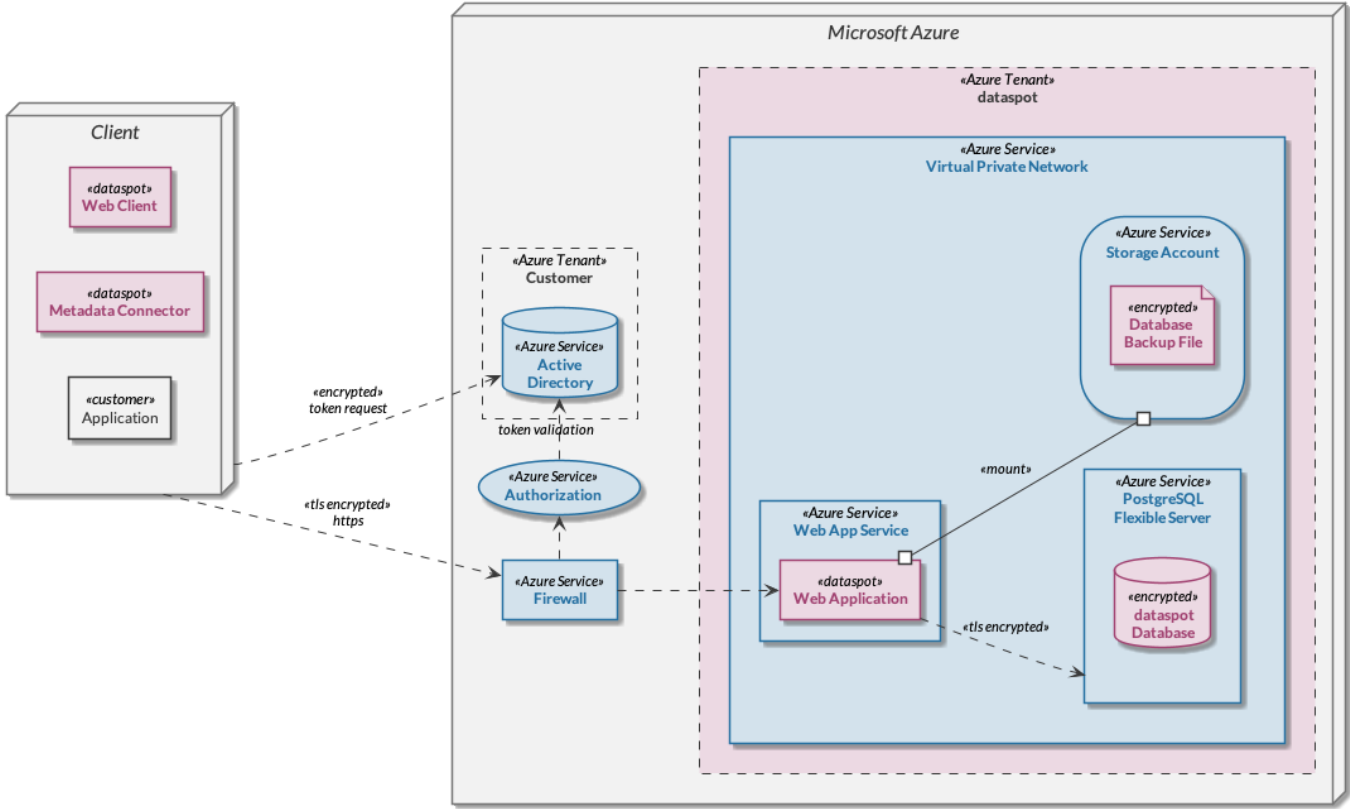


## Product information

Short description	<b>dataspot.</b> is a software solution to manage metadata in terms of business, technical and organizational metadata (business data model, reference data, data catalog, data lineage, processing directory, data quality, projects, organization, ...). The application is provided as Software as a Service (SaaS) and can be used via a browser (UI) or accessed via web interfaces. It supports business and IT users with a web-based user interface and comes with a central server installation on premise or on cloud. The <b>dataspot.</b> multi-tenant capabilities allow the management of cross-organizational metadata as well as the efficient collaboration between employees and organizations. Configurable workflows support the data governance collaboration.
Supplier	<b>dataspot.</b> gmbh, Vienna
Security information on the supplier	<b>dataspot.</b> gmbh is ISO 27001 certified (by TÜV Süd). The internationally recognized certification ISO/IEC 27001:2022 proves that the supplier <b>dataspot.</b> gmbh has introduced an effective information security management system (ISMS) and continuously ensures the security of information and data. 
Release	v2026.1 (as of January 2026)
Future improvements	<b>dataspot.</b> is enhanced and updated continuously. Product updates are delivered at no further charge within the subscription fee.
dataspot. onPrem	<b>dataspot.</b> can alternatively be licensed as a server component for central installation in the company or a cloud provider.

## Technical information

Supported operating systems (client)	Any operating system supporting a browser according to the stated browser requirements.
Browser	Current versions of Chrome, Safari, Microsoft Edge, or Firefox
Screen	Optimized for resolution of min. 1280 x 800

<p><i>SaaS Operations</i></p>	<p><b>dataspot.</b> is installed and preconfigured in the Microsoft tenant of <b>dataspot.</b> gmbh in Microsoft Azure by <b>dataspot.</b> gmbh.</p> <p>The installation is based on the following Microsoft Azure components:</p> <ul style="list-style-type: none"> <li>▪ Virtual Private Network</li> <li>▪ Web App Service</li> <li>▪ PostgreSQL Flexible Server</li> <li>▪ Storage Account</li> </ul>
	 <p>Figure 1: <b>dataspot. as a service</b> with authentication via the customer's Azure Active Directory (using OpenID Connect)</p>
<p><i>Security</i></p>	<p>All data is both stored and transmitted in encrypted form (in accordance with Azure Best Practices) and is therefore protected against unauthorized access.</p>
<p><i>Connectors &amp; network security</i></p>	<p>For reasons of network security it is recommended to run the connectors (JdbcMetadataConnector, SAP Metadata API by bluetelligence) on a server (e.g. a virtual machine) in the customer environment. From this server, both the external data source and <b>dataspot.</b> (if necessary via a proxy server) must be accessible.</p> <p>Hardware requirements Server:</p> <ul style="list-style-type: none"> <li>▪ Quad Core (4 cores) CPU with 8 GB main memory</li> <li>▪ At least 20 GB of available disk space is recommended</li> </ul>

<i>Backup</i>	Backup and restore of databases can be managed via the browser-based admin console. The functionality includes the creation, deletion, backup, and restore of the <b>dataspot.</b> databases. A regular daily backup is created on the server side. Thanks to the integrated backup rotation, backups of the last 15 days, as well as one for each of the last 15 weeks, 15 months and 15 years are retained.
<i>Version upgrade</i>	<b>dataspot.</b> is updated automatically by <b>dataspot.</b> at defined times. Explicit migration steps are not required. An upgrade of major or minor releases is announced in advance. Bug fix releases are installed without prior notice if required.
<i>Data migration</i>	Migration of data follows the agile principle of „ <i>Evolutionary Database Design</i> “, i.e. both the database scheme and the data are verified on upgrade and are brought up-to-date and are migrated automatically as necessary.

## User administration

<i>User administration</i>	<b>dataspot.</b> distinguishes between active (write access), read-only and administrative users. The software has a user administration panel where users active in the data excellence organization are managed. The software can be configured so that users with read-only access do not have to be explicitly created and managed by the user administration.
<i>Authorization, Role</i>	The software has a role-based authorization system where a role is assigned to every active user and administrator. The role and workflow determines the functional authorization.
<i>Authentication</i>	Any access to the application must be authenticated to verify the identity of the user. The following authentication methods are supported: <ul style="list-style-type: none"> <li>▪ The identity is verified using the login IDs and passwords managed in the application.</li> <li>▪ The Authentication uses OpenID Connect to verify the identity in an external identity provider (e.g. Microsoft Entra ID). The access data is transmitted to the server as a signed JSON Web Token (JWT).</li> </ul>

Data format	<b>dataspot.</b> uses the open source database PostgreSQL to store metadata.
Metadata Upload	<p>Interfaces for metadata import are implemented for all models and support the following formats:</p> <ul style="list-style-type: none"> <li>▪ Microsoft Excel</li> <li>▪ CSV</li> <li>▪ XML</li> <li>▪ JSON</li> <li>▪ XSD (XML Schema Definition)</li> <li>▪ JSON Schema</li> <li>▪ SQL/DDDL</li> </ul>
Metadata Download	<p>Interfaces for metadata export are implemented for all models and support the following formats:</p> <ul style="list-style-type: none"> <li>▪ Microsoft Excel</li> <li>▪ Adobe PDF</li> <li>▪ CSV</li> <li>▪ XML</li> <li>▪ JSON</li> <li>▪ XSD (XML Schema Definition)</li> <li>▪ XMI (UML)</li> <li>▪ SQL/DDDL</li> </ul>
Metadata REST/API	<p>REST conform application programming interfaces (APIs) for direct read and write access to metadata objects in the following formats:</p> <ul style="list-style-type: none"> <li>▪ JSON</li> </ul>
Metadata Connectors	<p>Programs that connect to external data sources and extract and transfer relevant metadata to <b>dataspot.</b>:</p> <ul style="list-style-type: none"> <li>▪ dataspot.DatabaseConnector</li> <li>▪ dataspot.StorageConnector</li> <li>▪ dataspot.DatabricksConnector</li> <li>▪ SAP Metadata API by bluetelligence</li> <li>▪ Power BI Connector by bluetelligence</li> </ul>

## Contact and other information

Further product information	<a href="https://www.dataspot.at/portfolio/metadatenmanagement-software/">https://www.dataspot.at/portfolio/metadatenmanagement-software/</a>
Copyright	The software <b>dataspot.</b> is protected by copyright.
Trademark protection	<b>dataspot.</b> is a registered trademark within the EU.
Terms & conditions	The general terms and conditions of <b>dataspot.</b> gmbh as of October 2025 apply.